



**SUPER
TEE**

TEAM BUILDING PACKING EVENT

Make a difference to sick kids in hospital.
Make your next team building event, a
Supertee packing event.

"Every event is an opportunity to touch the very thing that makes an impact to an individual child. Every time a pack is completed that's a another little hero helped to be prepared to fight their big battle - and its all thanks to people like you".

Jason Sotiris



THE POWER OF A SUPERTEE TEAM BUILDING PACKING EVENT

A Supertee packing event is a great way to identify core values and build long-lasting friendships. When people come together away from their desks, they have a chance to collaborate and form partnerships. Helping others is the best foundation of all, with this powerful experience helping fresh ideas to grow and flourish.

At Supertee, we use the power of team building to inspire the success of your organisation. Regardless of your size or sector, these activities can be hugely beneficial. New experiences are the foundation of learning, and Supertee helps you to create unforgettable memories through investigation and activity.

At Supertee, we organise transformative team building events. When new friendships are developed across your company, you can inspire growth from the inside out. We help to inspire individuals and build team chemistry while meeting CSR requirements. We give you an opportunity to give back, build positive associations for your brand, and make your vision come to life.

Participation at a Supertee packing event can help to improve your operational efficiency and maximise your return on investment. More than that, however, it presents you with a valuable opportunity to help children in need.



TEAM BUILDING

12 BENEFITS OF OUR TEAM BUILDING PACKING EVENTS

Team building drives togetherness to inspire growth. It's about understanding, appreciating, and developing the people in your proximity. When people are recognised and motivated, individuals are maximised and transformed into a single unified group. When this happens, you have a productive, motivated, and happy team.

Our team building events offer the following 12 key benefits:



1. TEAMWORK

Embarking on a team building event with Supertee is a memory your staff will cherish. As you build a teamwork culture, you will learn to work together and manage each other's strengths. You will learn to create a giving environment, understand how to work together, and develop valuable problem-solving skills.



2. COMMUNICATION

Effective communication is a vital skill for any high performing team. Working partnerships are integral to every organisational culture. With team building, your people have an amazing opportunity to develop and practice advanced communication skills in a unique environment.



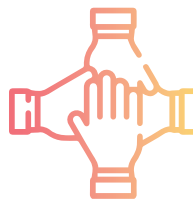
3. LEADERSHIP

As a true leader, this is your chance to give something back. Working with an innovative charity like Supertee will draw out and ignite the natural leaders in your team. This is a good opportunity to see your staff step up and perform in a fun and rewarding setting. Team building values exceptional abilities and highlights emerging leaders.



4. FUN

Fun is what Supertee is all about! With a little help, you can make your workplace fun too. When you create a relaxed and joyful environment, you can connect people together, build positive relationships, and inspire workplace performance. Fun is the precursor of innovation and creativity, and it's a great attribute for any organisation.



5. BONDING

Building relationships requires people to bond over a shared experience. When you do something positive for the community, you're helping your team come together. Assisting sick children with an amazing gift during a tough time is a great thing to share. Team building events help to inspire these important conversations.



6. CONFIDENCE

By participating in a Supertee packing event, your team will grow in confidence. When people move forward with belief and conviction, they can help to make the world a better place. This is one of the greatest gifts you can offer your employees. When people build confidence, they have a chance to grow and deliver beyond their potential.



9. MORALE

When a team works together to accomplish a task, a positive environment is created. The more people feel engaged, the more endorphins are released. This perpetual process builds morale as it gathers momentum — time and time again. Our packing events are a great way to deliver a sense of purpose and satisfaction across your entire team.



7. RESPONSIBILITY

Every member of your team has an important role to play. They have something to think about, act upon, and contribute to the collective. How they affect others and take responsibility for their decisions is an important life lesson. If you want your team to look beyond and see the bigger picture, Supertee's loving acts and amazing stories are a great place to start.



10. RESPECT

At a Supertee packing day, participants gain greater respect for each other and the company. When people believe in your direction, they're more willing to invest time and energy into the team building process. From shared experiences to enjoyable conversations, people benefit from a relaxed and fun environment built on mutual respect.



8. TRUST

Trust is the foundation of business culture. When people are trusted, they are more likely to feel comfortable, be creative, and deliver action with purpose. One of the best ways to build trust in your team and among your community is to step up and take responsibility. With vision and follow-through, you can build your organisation while caring for those in your community.



11. CULTURE

Team building days are designed to reinforce the values and vision of your company. They help to forge strong relationships and contribute to positive workplace culture. Depending on the size and maturity of your team, Supertee packing events can initiate, reinforce, or evolve your business culture.



12. BECOME PART OF THE SUPERTEE STORY

The Supertee team building program allows participants to see the results of their contribution. When your values are aligned and your vision is clear, everything you do takes on a renewed sense of purpose. When your team hears about their contribution, they will feel inspired and energised. At Supertee, we offer values, footage, and memories to drive results for years to come.

Supertee team building events build trust, respect, and responsibility throughout your organisation. If your values align with ours, we can help to ignite your business culture through the power of teamwork. Supertee packing events present a chance to engage and inspire people in unison. When you give people room to shine, you really can make the world a better place.

Working together makes all the difference!



HOW OUR TEAM BUILDING EVENTS ARE CONDUCTED

We provide a structured process to achieve an important end goal — helping children in hospital to fight the toughest battles of their young lives. All packing events include the following elements:

- Strict hygiene protocol will be followed on the day, as these are medical garments being delivered to very sick children.
- Guidance and explanations will be given from the start.
- A presentation will be delivered about the positive impact of these imaginative hospital garments.
- Fun is compulsory and sharing is important for every 'Corporate Funded Team Packing Event'. Please share this great activity, both internally and through social media. Use this event to share your culture with customers and peers through channels and hashtags.



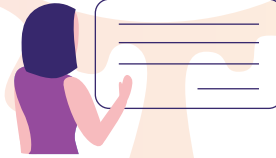
TEAM BUILDING

PACKING EVENT



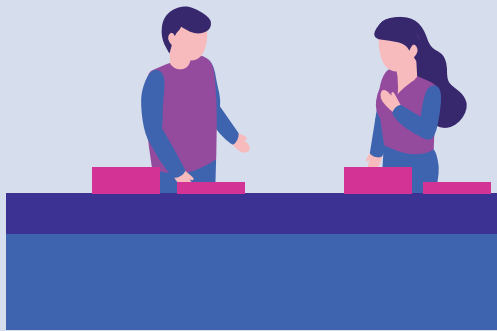
TIN PREPARATION STATION

- Remove an empty tin from the carton.
- Place the sticker and comic in the tin facing up.
- Place it on the table with its lid next to it.



MESSAGE SCRIBER STATION

- Write a clear, compassionate message to the sick child who opens the tin.



FINAL CHECKING STATION

- Add the folded Supertee to the tin.
- Add the bookmark and message on top of the Supertee.
- Write the colour and size on the white square on the bottom of the tin.
- Check off the colour and size off the Hospital packing sheet.
- Record the final quantity to be delivered.
- Prepare the cartons for delivery



FOLDING STATION

- Normally one row of tables per hospital.
- Every Supertee needs to be folded in exactly the same way with the chest design facing up.
- Each size of Supertee needs to comfortably fit in the tin without crushing.



PICKING STATION

- Remove the Supertee from the carton, one colour and size at a time.
- Remove Supertee from the zip locked bag and discard any packing material.
- Carry out a final quality control check for print quality, loose threads or fluff and ensure all poppers are working.
- Discard any faulty garments.

THE BENEFITS OF SHARING YOUR EVENT

The Supertee Team Building Packing Event is made for sharing. From websites and internal documents to social media accounts, sharing this special day with the wider community is good for your profile and great for the cause. Photographs and videos will be taken throughout the day, so it's easy to tell your customers what you've been up to.

The packing event is a good-natured, community-focused, and team building activity that works through the power of positive action. When you attend a team building session, it says something about your business. When you share it with others, it puts your culture in the spotlight.

HOW TO GET INVOLVED

Getting involved with a packing event is easy. Team sizes change for each packing event, depending on the number of packs currently needed by hospitals. We offer both corporate-funded events and community events. The following event sizes are standard:

- 12 People are needed to create 400 packs
- 21 People are needed to create 1000 packs

If you'd like to split the day into 2 shifts to involve more team members, we can arrange the details.



CORPORATE FUNDED TEAM PACKING EVENT

At a corporate Supertee packing event, you can fund garments that make a real difference to the lives of very sick children.

Rally your team together for a fun and rewarding team building exercise. You can build trust, encourage communication, and increase collaboration across your organisation.

Make the most of your time and share this great activity, both internally and through social media. Use this event to share your culture and highlight your brand to the world.

T: 1300 466 797

E: info@supertee.org.au



WHAT OUR SUPPORTERS SAY ABOUT OUR TEAM BUILDING PACKING EVENTS

"When I look around the room at the event today, you can't be thankful enough for the volunteers who give up their time to support, to pack, to help create superheroes in some of our sickest children today, making their fight a little bit easier and we're very proud to be a partner with Supertee."

Joe Roff, CEO - John James Foundation

"We are very grateful to Supertee for the opportunity to be involved in their packing event. The event was a huge success. Not only was the WEM Team able to give back to our community, but the experience also allowed us to bond and build new friendships for a great cause. The team was proud to pack 1000 Supertees on the day for the kids receiving treatment at our local hospitals. It was such a fun and rewarding day and we are already planning our next packing event."

Antoinette Howe, People & Culture Manager - Western Earthmoving





HELPING SICK KIDS IN HOSPITAL

P: 1300 466 797

A: PO Box 5131, Greystanes NSW 2145

W: supertee.org.au

© Supertee 2022. All rights reserved.

